

# PARKWAY ECSE

## Family Newsletter

Spring  
Edition

### WHAT'S NEW

Everyone is ready for some warmer weather, right? Let's hope spring weather is around the corner!

#### Extended School Year (ESY)

ESY eligibility is determined typically after a break in services. If a student demonstrates regression on IEP goals and does not recoup skills in a reasonable amount of time, he/she may be eligible for ESY. Your child's teacher/case manager will discuss this with you.

#### Annual IEPs

IEPs must occur annually, but can occur more often if there are big changes suggested. The IEP is a fluid document. Parents can also request the IEP team meet to discuss concerns or questions without it being an actual IEP. Procedural Safeguards describe your rights and can be found on SSD's website [here](#).

Most IEP questions can be directed to your child's teacher/case manager. He/she is always willing to help and assist in your understanding of the special education process. You can also contact the special education coordinators, Jen or Liz.

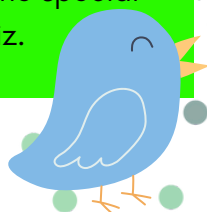
### REMINDERS



- \*March 14-21: Spring Break (NO SCHOOL)
- \*April 8: NO SCHOOL; Professional Development Day
- \*April 17: Early Release; No PM classes
- \*April 18: NO SCHOOL
- \*May 7: Early Release, No PM classes
- \*May 28: NO SCHOOL
- \*May 29: Last Day; half day of school; No PM classes

### ECSE RESOURCE LINKS

- [Student Support Facilitator Family Channel](#)
- [Alternative and Augmentative Communication Site \(AAC\)](#)
- [SSD Family and Community Engagement \(FACE\)](#)



## CHANGE CAN BE HARD

We know change can be hard. During spring, teachers may begin talking to you about changes for next year.

If you have a child transitioning to kindergarten, you are likely preparing for that change. Let us know if we can support you in any way.

Teachers might also talk to you about a less restrictive setting or change in classroom (which could mean new teachers and therapists) or a change from morning to afternoon.

We will always do what is in the best interest of your child, but check out these resources to support change for your child.

[YOU TUBE CHANGE VIDEO](#)

[Helping A Child Cope with Change](#)



## CONTACT US

IF YOU HAVE ANY QUESTIONS ABOUT YOUR CHILD'S SPECIAL EDUCATION SERVICES, PLEASE CONTACT YOUR CHILD'S SPECIAL EDUCATION COORDINATOR.



JEN ROPER

JLROPER@SSDMO.ORG

314-415-4983

SUPERVISES: MOST OF THE ECSE STAFF AND CLASSROOMS



LIZ KENNER

ELKENNER@SSDMO.ORG

314-988-7831

SUPERVISES: ECSE INTENSIVE NEEDS ROOMS AND ECSE EVALUATIONS

## TEAM HIGHLIGHTS

Itinerant teachers: Trish Mantia, Mike Scaglione, and Lisa Sandberg

Kimberly's team: Kimberly Wilson, Yolanda Marshall, Kim Sonderman, and Donna Sell

Sarah's team: Kristie Divis, Sarah McKeever, and Teresa Loomis

Mercedes' team: Cecelia Baker and Mercedes Moore

Stephanie's team: Stephanie Talbot and Karen Blgere

Jennifer's team: Kourtlyn Thomas, Jennifer Beiter, and Kristin Snyder

Susie's team: Caroline Maury, Susie Stygar, and Pat Woodward

Karly's team: Katie Schindler, Karly Raymond, and Lilli Umsted

# Itinerant Teachers



## PEC-West Classrooms



KIMBERLY'S ROOM



SARAH'S ROOM





MERCEDES' ROOM



STEPHANIE'S ROOM



JENNIFER'S ROOM



SUSIE'S ROOM



KARLY'S ROOM